

ABBYY®

1.				3
1.1.				3
2.				4
2.1.				4
2.2.				4
3.				6
3.1.				5
	%			
3.1.1.				8
3.2.		(%),	9
3.2.1.		(%),	11
3.3.				13
	%			
3.3.1.				14
3.4.		(%),	15
3.4.1.		(%)	16
	,			
4.				17
4.1.				17
4.2.				17
4.3.				20
4.4.				20

1.

1.1 Общие характеристики проведённой работы

1

07/9/2016 - 21/9/2016 .

- ,

10

9.60

17

56%

2.

2.1.

	-	.	%
»	10	9.60	56%
	244	9.36	55%
" "	10903	8.95	53%
	14976	9.28	55%

2.2.

	-	.	%
9	10	9.60	56%
»	10	9.60	56%

3.1.

%

		.% .
8.1	.	98%
6.1		97%
7.18		97%
8.4	, ,	97%
8.6	-	97%
9.2		97%
9.3	()	97%
9.4	()	97%
10.1		80%
6.10		80%
6.7	(- -/- -)	80%
6.8	- - - -	80%
5.1		70%
6.16	, ,	70%
6.6		70%
2.2	. .	60%
2.4		60%
5.13		60%
5.2	. . ()	30%
5.7		30%
7.2		30%
7.3		30%

7.4		30%
7.5		30%
7.7	()	30%
7.19		18%
7.8	,	15%
5.8		0%
7.11		0%
7.12		0%

3.1.1.

		9
2.2		60%
2.4		60%
5.1		70%
5.2	()	30%
5.7		30%
5.8		0%
5.13		60%
6.1		97%
6.6		70%
6.7	(- -/ -)	80%
6.8	- - - -	80%
6.10		80%
6.16	, ,	70%
7.2		30%
7.3		30%
7.4		30%
7.5		30%
7.7	()	30%
7.8	,	15%
7.11		0%
7.12		0%
7.18		97%
7.19		18%
8.1		98%
8.4	, ,	97%

3.1.1.

		9
8.6	-	97%
9.2		97%
9.3	()	97%
9.4	()	97%
10.1		80%

3.2.

(%

),

		. % .
		98%
8.1	.	98%
8.6	-	97%
8.4	,	97%
		97%
9.4	()	97%
9.3	()	97%
9.2		97%
		80%
10.1		80%
		79%
6.1		97%
6.10		80%
6.8	- - - -	80%
6.7	-/- -) (-	80%
6.16	,	70%
6.6		70%
		60%
2.4		60%
2.2	.	60%
	.	34%
5.1		70%
5.13		60%
5.7		30%

		.% .
5.2	()	30%
5.8		0%
		26%
7.18		97%
7.7	()	30%
7.5		30%
7.4		30%
7.3		30%
7.2		30%
7.19		18%
7.8	,	15%
7.12		0%
7.11		0%

3.2.1.

(%),

			9
	2.2		60%
	2.4		60%
	5.1		70%
	5.2	()	30%
	5.7		30%
	5.8		0%
	5.13		60%
	6.1		97%
	6.6		70%
	6.7	(- -/ - -)	80%
	6.8	- - - -	80%
	6.10		80%
	6.16	, ,	70%
	7.2		30%
	7.3		30%
	7.4		30%
	7.5		30%
	7.7	()	30%
	7.8	,	15%
	7.11		0%
	7.12		0%
	7.18		97%
	7.19		18%
	8.1	.	98%
	8.4	, ,	97%
	8.6	-	97%
	9.2		97%

			9
	9.3	()	97%
	9.4	()	97%
	10.1		80%

3.3.

%

		.% .
2.3	(,)	100%
2.1	(,)	98%
2.4		98%
3.1	(, ,)	97%
3.3	, ,	97%
3.5	(, , , , .)	97%
3.6	, : ,	97%
3.8		97%
3.9	(,)	97%
3.10	, , ; ;	97%
1.3	, , , -	60%
1.1	,	43%

3.3.1.

		9
1.1	,	43%
1.3	' , - ,	60%
2.1	(, ,)	98%
2.3	() , ,	100%
2.4		98%
3.1) (, ,	97%
3.3		97%
3.5	' (, , .)	97%
3.6	:	97%
3.8		97%
3.9	() ,	97%
3.10	;	97%

3.4. (%,),

		.% .
		99%
2.3	(,)	100%
2.4		98%
2.1	(,)	98%
		97%
3.10	; ; , , ;	97%
3.9	(,)	97%
3.8		97%
3.6	: , ,	97%
3.5	(, , , , ,)	97%
3.3	, ,	97%
3.1	(, ,)	97%
		44%
1.3	, , , -	60%
1.1	,	43%

3.4.1.

(%) ,

			9
	1.1	,	43%
	1.3	, , - ,	60%
	2.1	(, ,)	98%
	2.3	() , ,	100%
	2.4		98%
	3.1) (, ,	97%
	3.3	, ,	97%
	3.5	, (, , .)	97%
	3.6	: , ,	97%
	3.8		97%
	3.9	() ,	97%
	3.10	, ; , , ,	97%

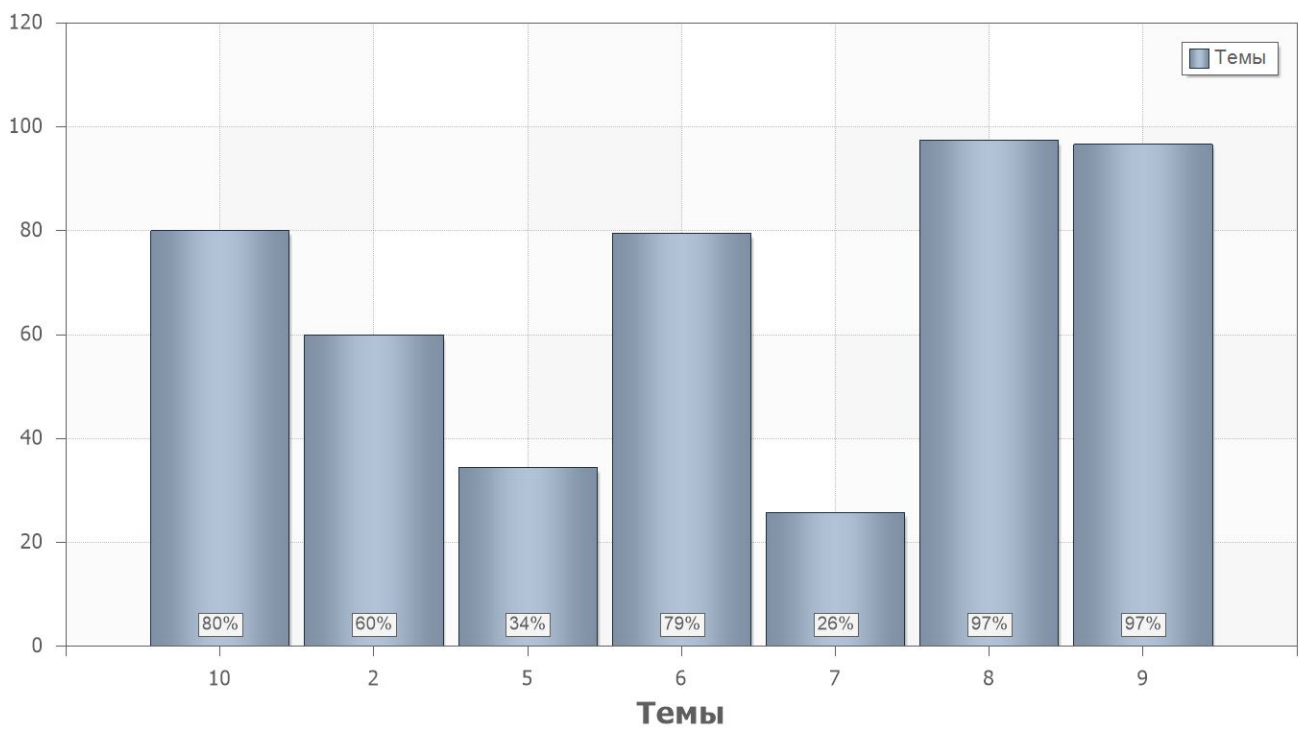
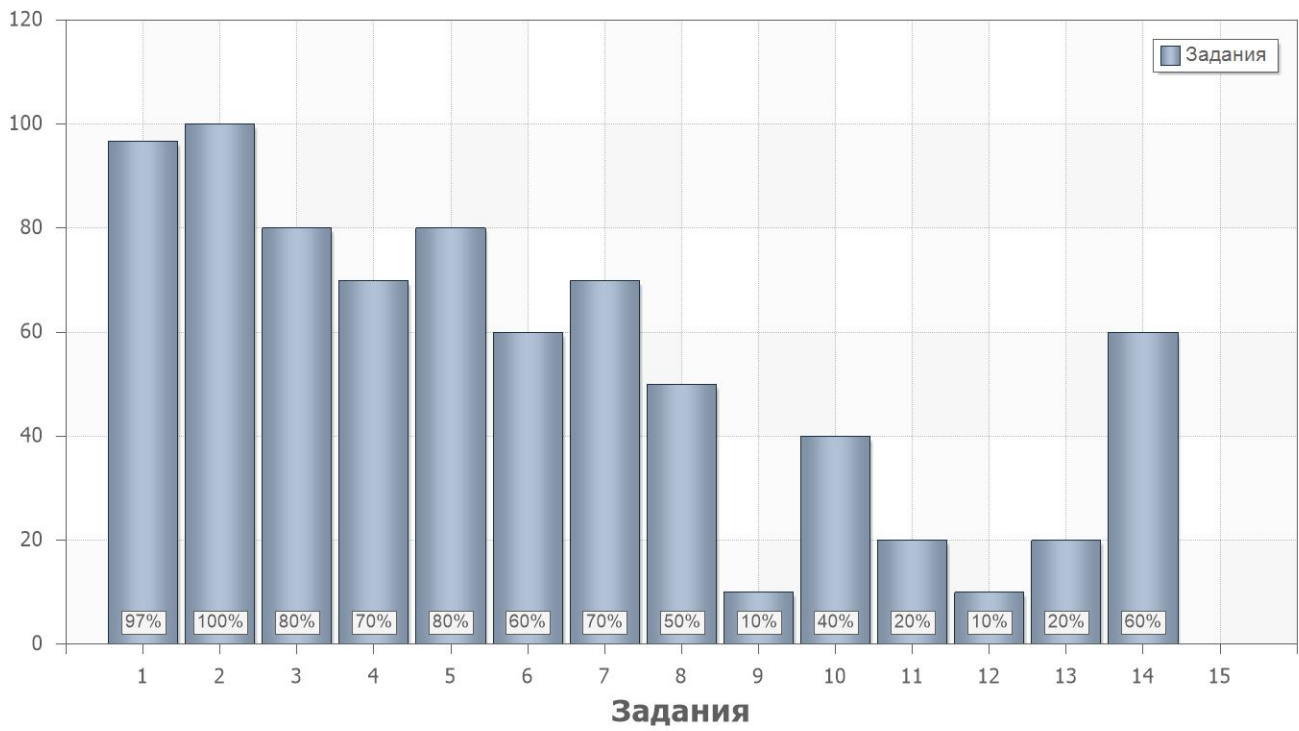
4.

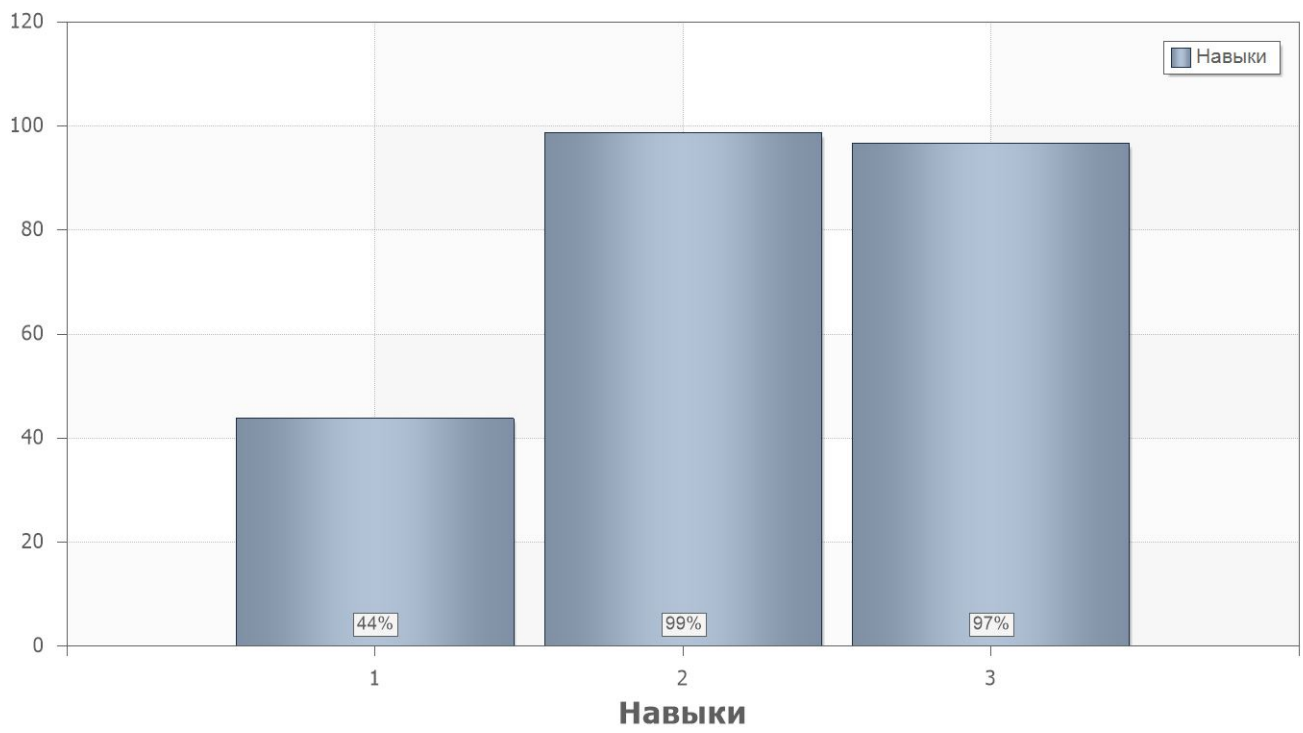
4.1.

	. % .
1	55
2	58

4.2.

	. % .		
1			
1	97	11;6.1;8.1;8.4;8.6;9.2;9.3;9.4;7.18	2.1;2.4;3.1;3.3;3.5;3.6;3.8;3.9;3.10
2	100	8.1	2.1;2.3;2.4
3	80	10.1	1.1
4	70	6.6;6.16	1.1
5	80	6.7;6.8;6.10	1.1
6	60	2.2;2.4	1.3
7	70	5.1	1.1
8	50	5.2	1.1
9	10	5.2	1.1
10	40	5.2;5.7;7.2;7.3;7.4;7.5;7.7;7.19	1.1
11	20	5.2;5.7;7.2;7.3;7.4;7.5;7.7;7.19	1.1
12	10	7.8;7.19	1.1
13	20	7.8;7.19	1.1
14	60	5.13	1.1
15	0	5.8;7.11;7.12;7.19	1.1





4.3.

Name	9
1	55%
2	58%

4.4.

PartIndex	Number	9
1	1	97%
	2	100%
	3	80%
	4	70%
	5	80%
	6	60%
	7	70%
	8	50%
	9	10%
	10	40%
	11	20%
	12	10%
	13	20%
	14	60%
	15	0%