

ABBYY®

1.				3
1.1.				3
2.				4
2.1.				4
2.2.				4
3.				5
3.1.				5
		%		5
3.1.1.				6
3.2.			(% ,)	7
3.2.1.			(% ,)	8
3.3.				9
		%		9
3.3.1.				10
3.4.			(% ,)	11
3.4.1.			(%)	12
	,			12
4.				14
4.1.				14
4.2.				14
4.3.				17
4.4.				17

1.

1.1 Общие характеристики проведённой работы

1

09/9/2016 - 30/9/2016 .

()

- ,

10

10.30

15

69%

2.

2.1.

	-	.	%
»	10	10.30	69%
	248	8.05	54%
" "	10825	7.65	51%
	14951	7.78	52%

2.2.

	-	.	%
9	10	10.30	69%
»	10	10.30	69%

3.1.

%

		.% .
1.0		93%
8.0		75%
7.0		72%
2.0		65%
6.0		65%
3.0		53%
5.0		50%

3.1.1.

		9
1.0		93%
2.0		65%
3.0		53%
5.0		50%
6.0		65%
7.0		72%
8.0		75%

3.2.

(%

),

		. % .
		93%
1.0		93%
		75%
8.0		75%
		72%
7.0		72%
		65%
2.0		65%
		65%
6.0		65%
		53%
3.0		53%
		50%
5.0		50%

3.2.1.

(%),

			9
	1.0		93%
	2.0		65%
	3.0		53%
	5.0		50%
	6.0		65%
	7.0		72%
	8.0		75%

3.3.**%**

		. % .
7.8	,	100%
1.0		90%
7.0	,	82%
2.0		60%
5.0	,	57%
4.0		50%
3.0	,	30%

3.3.1.

		9
1.0		90%
2.0		60%
3.0	,	30%
4.0		50%
5.0	,	57%
7.0	,	82%
7.8	,	100%

3.4.

(%),

		. % .
		90%
1.0		90%
	,	85%
7.8	,	100%
7.0	,	82%
		60%
2.0		60%
	,	57%
5.0	,	57%
		50%
4.0		50%
	,	30%
3.0	,	30%

3.4.1.

(%) ,

			9
	1.0		90%
	2.0		60%
,	3.0	,	30%
	4.0		50%
	5.0	,	57%
,			
	7.0	,	82%

	7.8		100%
--	-----	--	------

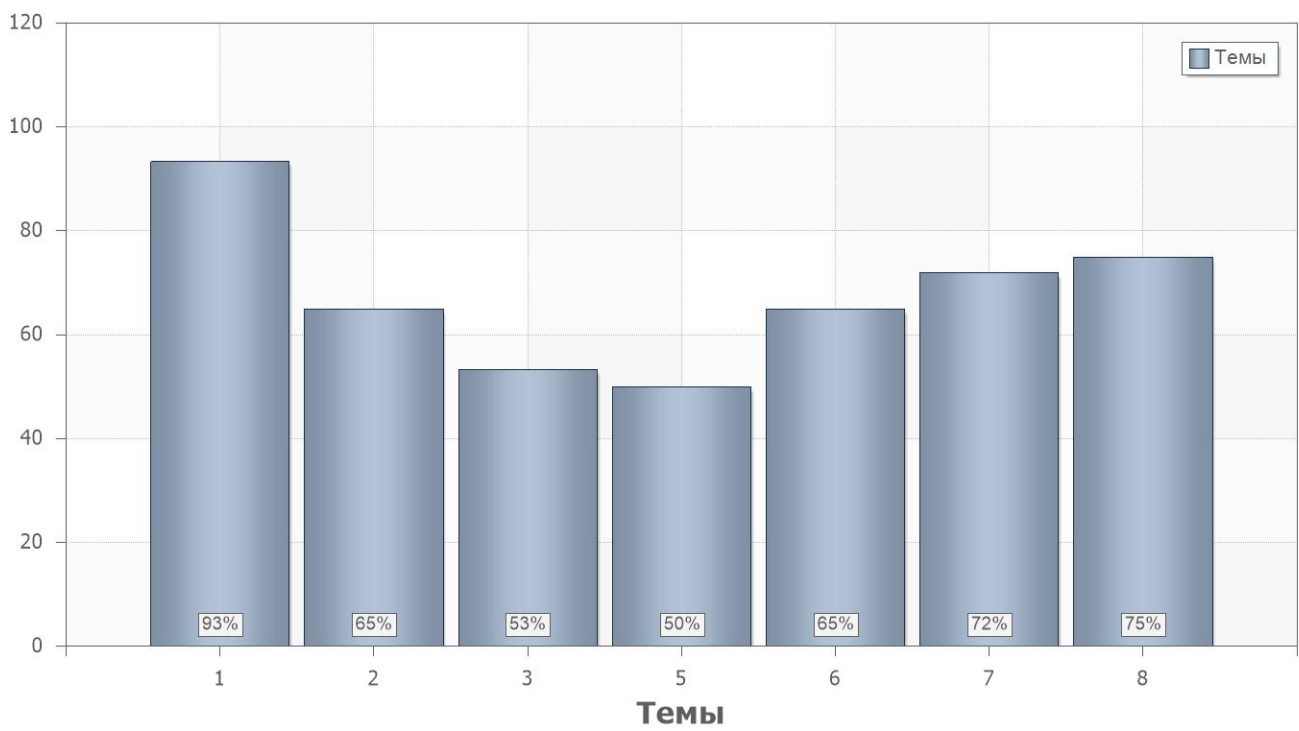
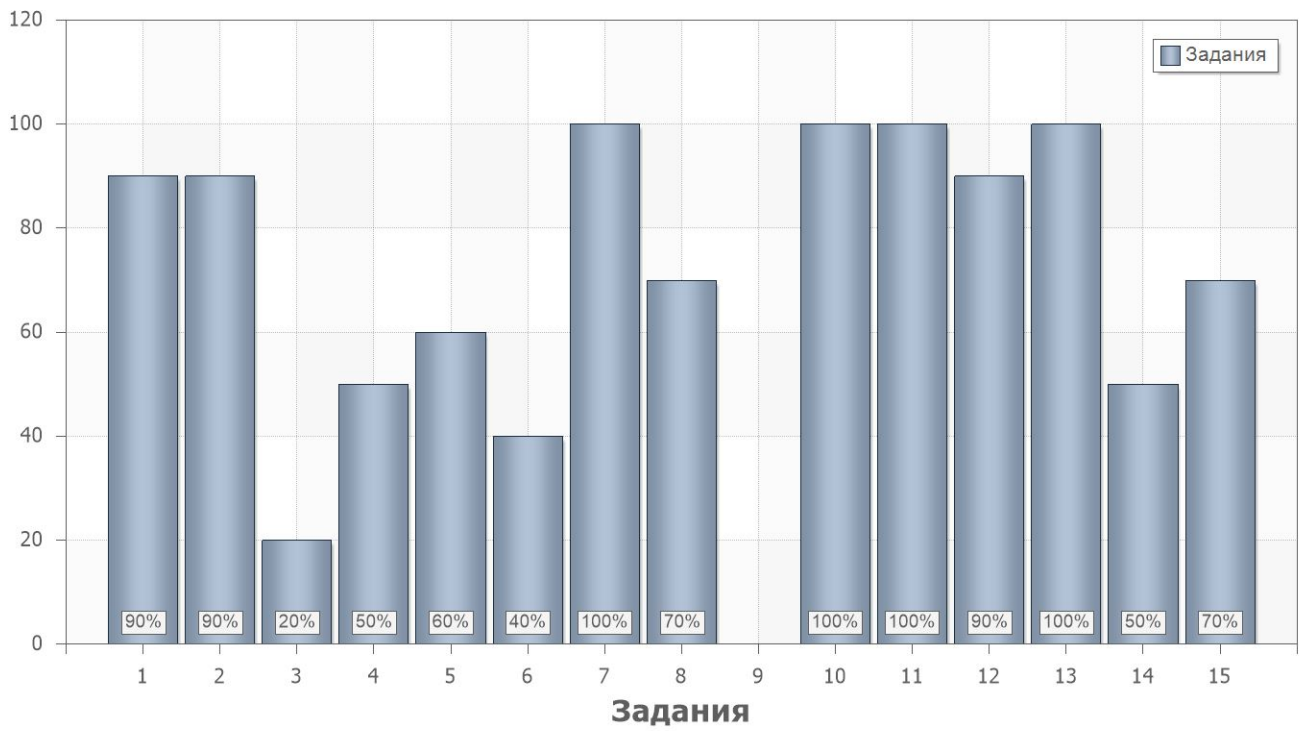
4.

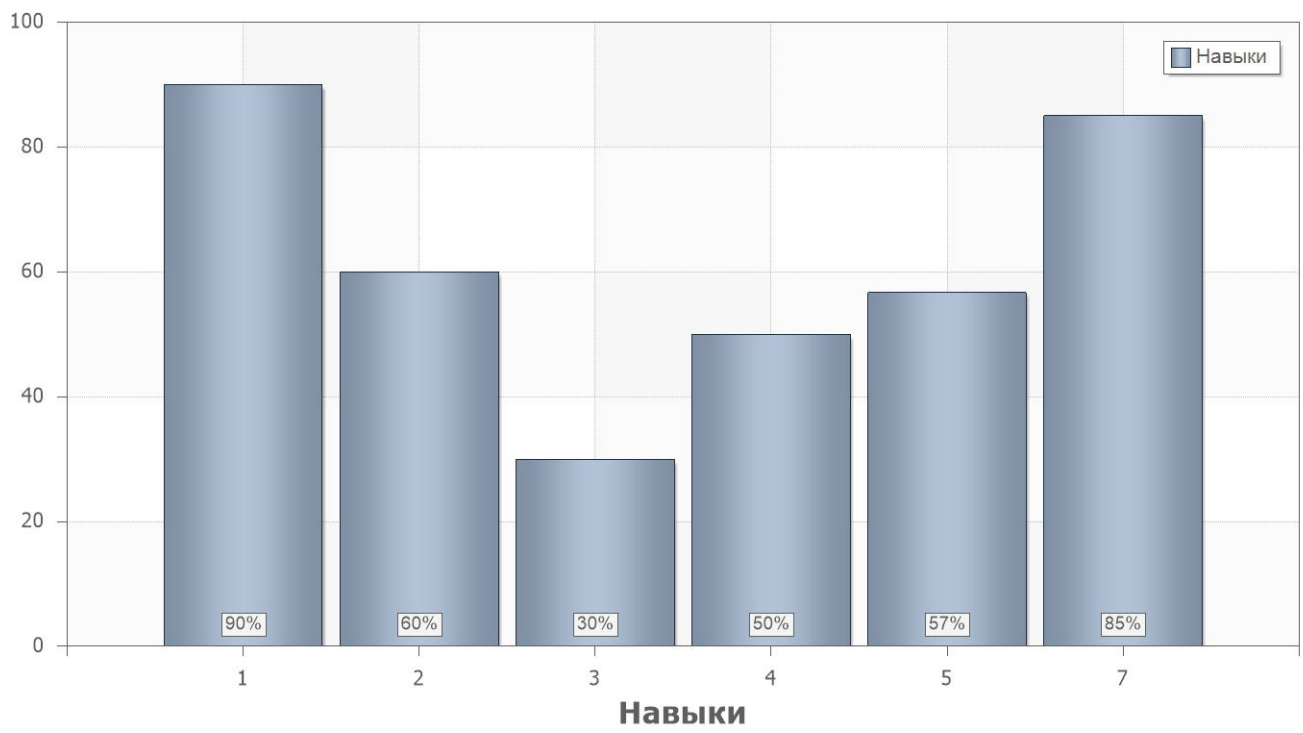
4.1.

	. % .
2	65
1	72

4.2.

	. % .		
1			
1	90	1.0	1.0
2	90	1.0;6.0	1.0
3	20	3.0	3.0
4	50	5.0	4.0
5	60	2.0	2.0
6	40	3.0;6.0	3.0
7	100	7.0	5.0
8	70	7.0	5.0
9	0	7.0	5.0
10	100	7.0	7.8
11	100	1.0;3.0	7.0
12	90	7.0	7.0
13	100	8.0	7.0
14	50	8.0	7.0
15	70	2.0	7.0





4.3.

Name	9
1	72%
2	65%

4.4.

PartIndex	Number	9
1	1	90%
	2	90%
	3	20%
	4	50%
	5	60%
	6	40%
	7	100%
	8	70%
	9	0%
	10	100%
	11	100%
	12	90%
	13	100%
	14	50%
	15	70%