

ABBYY®

1.				3
1.1.				3
2.				4
2.1.				4
2.2.				4
3.				6
3.1.				5
	%			
3.1.1.				8
3.2.		(%),	9
3.2.1.		(%),	11
3.3.				13
	%			
3.3.1.				14
3.4.		(%),	15
3.4.1.		(%)	16
	,			
4.				17
4.1.				17
4.2.				17
4.3.				21
4.4.				21

1.

1.1 Общие характеристики проведённой работы

2

07/9/2016 - 21/9/2016 .

- ,

18

15.89

38

42%

2.

2.1.

	-	.	%
»	18	15.89	42%
	208	19.17	50%
" "	5989	20.77	55%
	8443	22.26	59%

2.2.

	-	.	%
11	18	15.89	42%
»	18	15.89	42%

3.1.

%

		.% .
6.7	(- -/ - -)	89%
6.6		83%
6.10		78%
6.16	' ,	67%
2.1		67%
9.2		67%
9.3	()	61%
7.18		61%
7.2		61%
9.1		56%
8.2		53%
8.6	-	42%
2.2	.	39%
2.3		39%
2.4		39%
2.5		39%
6.11		39%
6.13		39%
6.8	- - - -	33%
7.8	,	33%
7.12		28%
7.7	()	22%

8.3	-	22%
9.4	()	20%
6.5		17%
7.13		11%
7.15		11%
8.1	.	11%
10.5		10%

3.1.1.

		11
2.1		67%
2.2		39%
2.3		39%
2.4		39%
2.5		39%
6.5		17%
6.6		83%
6.7	(- -/ - -)	89%
6.8	- - - -	33%
6.10		78%
6.11		39%
6.13		39%
6.16	, ,	67%
7.2		61%
7.7	()	22%
7.8	,	33%
7.12		28%
7.13		11%
7.15		11%
7.18		61%
8.1	.	11%
8.2		53%
8.3	-	22%
8.6	-	42%
9.1		56%

3.1.1.

		11
9.2		67%
9.3	()	61%
9.4	()	20%
10.5		10%

3.2.

(%

),

		. % .
		56%
6.7	-/- -) (-	89%
6.6		83%
6.10		78%
6.16	, ,	67%
6.13		39%
6.11		39%
6.8	- - - -	33%
6.5		17%
		51%
9.2		67%
9.3	()	61%
9.1		56%
9.4	()	20%
		48%
2.1		67%
2.5		39%
2.4		39%
2.3		39%
2.2	. .	39%
		36%
8.2		53%
8.6	-	42%
8.3	-	22%

		.% .
8.1	.	11%
		33%
7.18		61%
7.2		61%
7.8	,	33%
7.12		28%
7.7	()	22%
7.15		11%
7.13		11%
		10%
10.5		10%

3.2.1.

(%

),

			11
	2.1		67%
	2.2		39%
	2.3		39%
	2.4		39%
	2.5		39%
	6.5		17%
	6.6		83%
	6.7	(- -/- -)	89%
	6.8	- - - -	33%
	6.10		78%
	6.11		39%
	6.13		39%
	6.16		67%
	7.2		61%
	7.7	()	22%
	7.8		33%
	7.12		28%
	7.13		11%
	7.15		11%
	7.18		61%
	8.1		11%
	8.2		53%
	8.3		22%
	8.6		42%
	9.1		56%
	9.2		67%
	9.3	()	61%
	9.4	()	20%

			11
	10.5		10%

3.3.

%

		.% .
1.4	, , - ,	52%
2.1	, - (.) -	48%
1.1	,	46%
2.3		45%
3.1	- , - (;) ,	42%
3.2	, , ;	42%
3.3		42%
3.4	, D53	42%
2.2	: - , ;	34%
1.2	,	10%
1.3	,	10%

3.3.1.

		11
1.1	,	46%
1.2	; ,	10%
1.3	,	10%
1.4	- ,	52%
2.1	-) (- ,	48%
2.2	; ,	34%
2.3		45%
3.1	-) , - (;	42%
3.2	; ,	42%
3.3		42%
3.4	, D53	42%

3.4.

(%

),

		.% .
		44%
1.4	, , - ,	52%
1.1	,	46%
1.3	,	10%
1.2	; ,	10%
		44%
2.1	, - (.) -	48%
2.3		45%
2.2	: - , ,	34%
		42%
3.4	, D53	42%
3.3		42%
3.2	, , ;	42%
3.1	- , - , (;	42%

3.4.1.

(%) ,

			11
	1.1	,	46%
	1.2	; ,	10%
	1.3	,	10%
	1.4	- , , ,	52%
	2.1	- .) (- ,	48%
	2.2	, , : -	34%
	2.3		45%
	3.1	- , - (,) ;	42%
	3.2	; ,	42%
	3.3		42%
	3.4	, D53	42%

4.

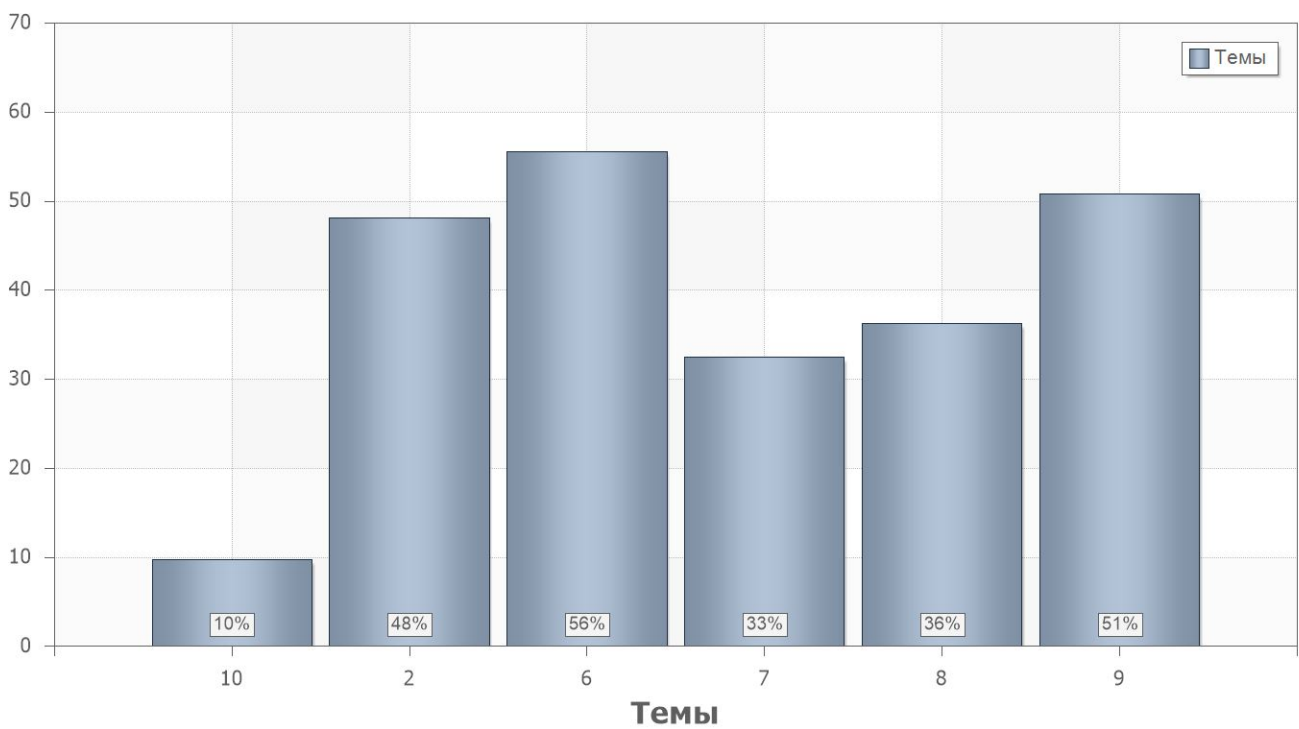
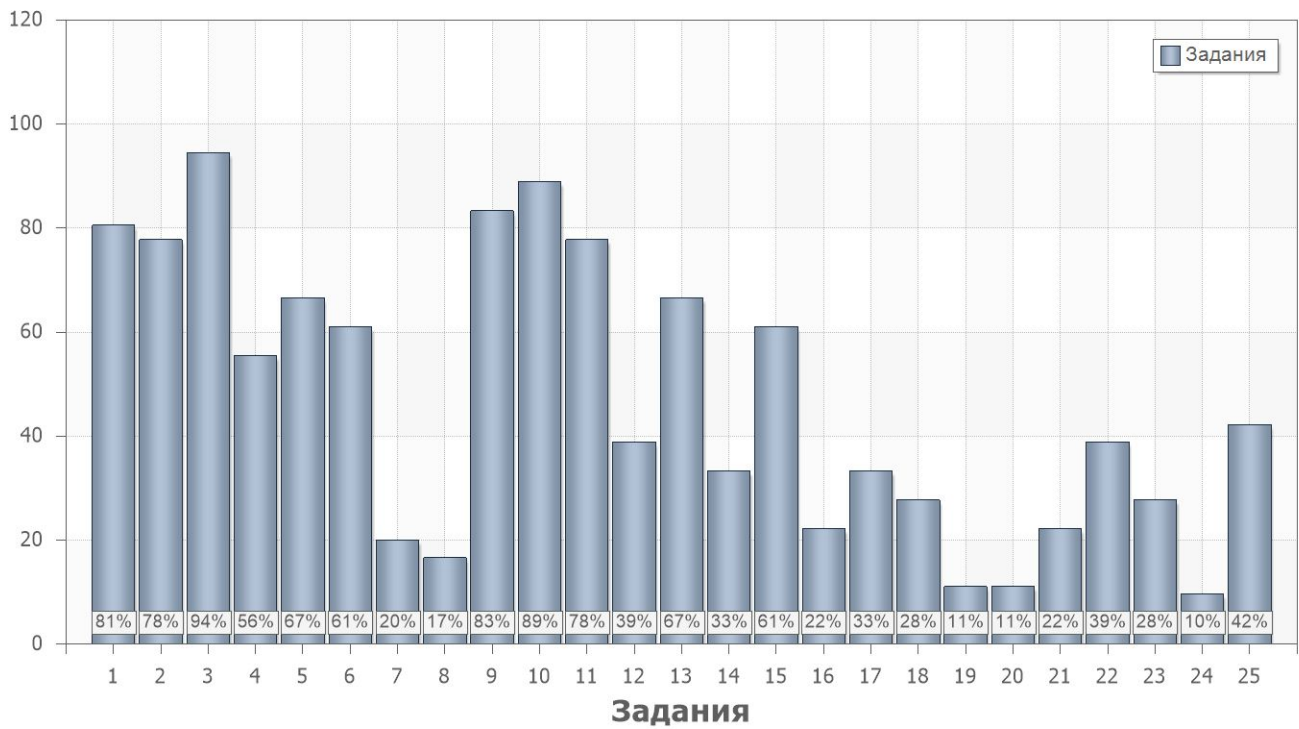
4.1.

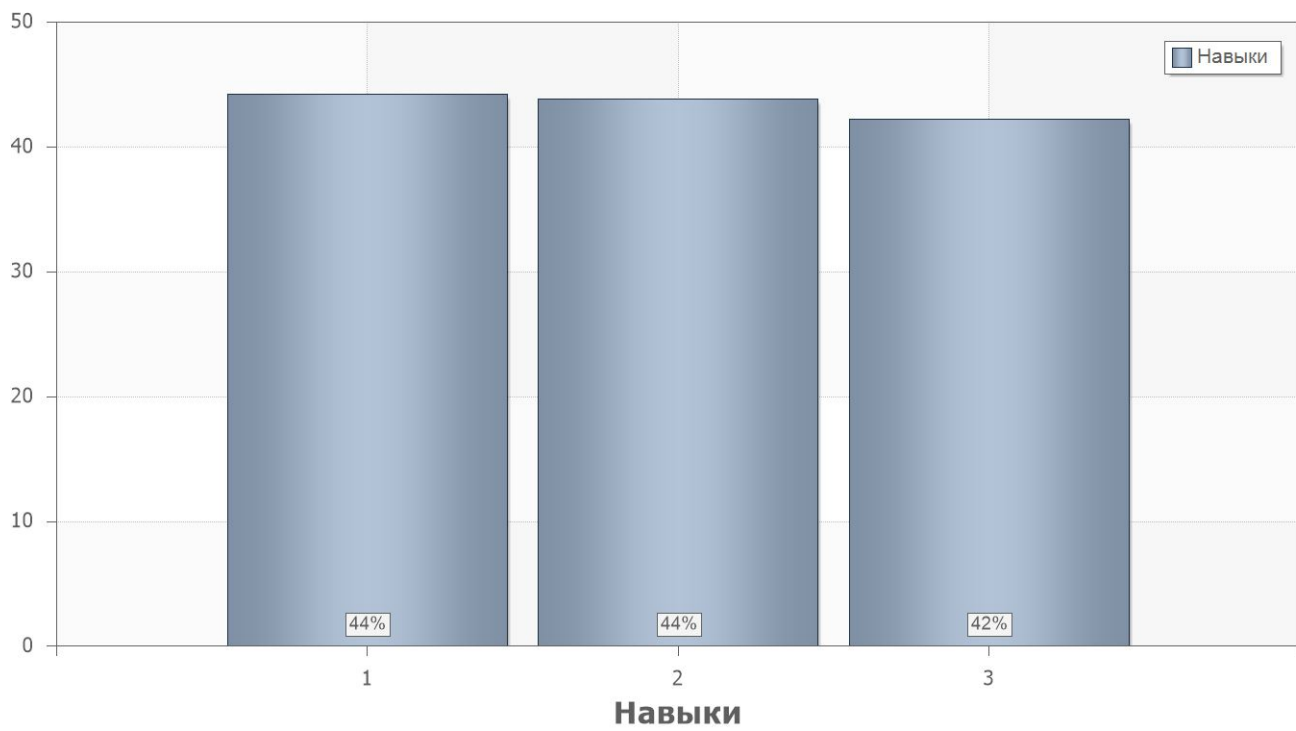
	. % .
2	39
1	45

4.2.

	. % .		
1			
1	81	11	2.1;2.2;2.3
2	78	8.2	1.4;2.1
3	94	2.1	1.1;1.4;2.1
4	56	9.1	1.1
5	67	9.2	1.1
6	61	9.3	1.1
7	20	9.4	1.1
8	17	6.5	1.1
9	83	6.6	1.1
10	89	6.7	1.1
11	78	6.10	1.1
12	39	6.11;6.13	1.1
13	67	6.16	1.1
14	33	6.8	1.1
15	61	7.2;7.18	1.1
16	22	7.7	1.1
17	33	7.8	1.1
18	28	7.12	1.1
19	11	7.13;7.15	1.1

	. % .		
20	11	8.1	2.1;2.2
21	22	8.3	1.1;1.4;2.1
22	39	2.1;2.2;2.3;2.4;2.5	1.1;1.4;2.1
23	28	8.2	1.1;1.4
24	10	10.5	1.1;1.2;1.3;2.1;2.2;2.3
2			
25	42	11;8.6	3.1;3.2;3.3;3.4





4.3.

Name	11
1	45%
2	39%

4.4.

PartIndex	Number	11
1	1	81%
	2	78%
	3	94%
	4	56%
	5	67%
	6	61%
	7	20%
	8	17%
	9	83%
	10	89%
	11	78%
	12	39%
	13	67%
	14	33%
	15	61%
	16	22%
	17	33%
	18	28%
	19	11%
	20	11%
	21	22%
	22	39%
	23	28%
	24	10%
2	25	42%